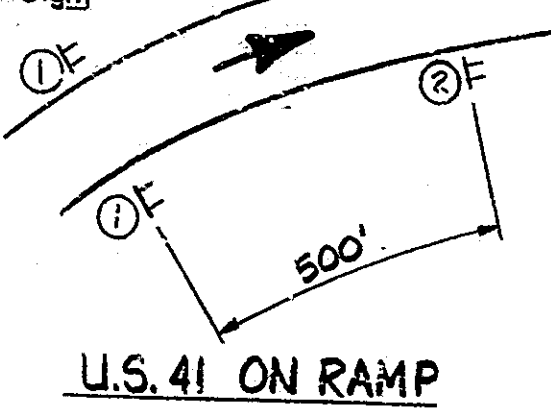


Note:
See Road Standard Sht. 1 Detour for advance warning signs and merging of 2 lanes to 1 lane.

- LEGEND**
- Indicates skip lines or pavement edge lines to be removed.
 - Drum or Type II Barricade w/Type C Steady Burning Light. (Not a pay item)
 - TPM Indicates Temporary Pavement Marking. (Type and color as noted)
 - ①F Road Construction Ahead sign (W20-1) 48" x 48"
 - ②F Yield sign (R1-2-A) 48" x 48" x 48"
 - ③F End Construction sign (G20-2) 24" x 60"



TRAFFIC MAINTENANCE DETAILS
No Scale

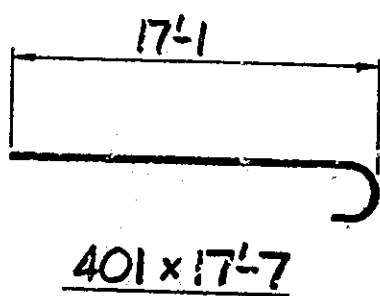
STR. No I-70-7-5039B

BILL OF MATERIALS

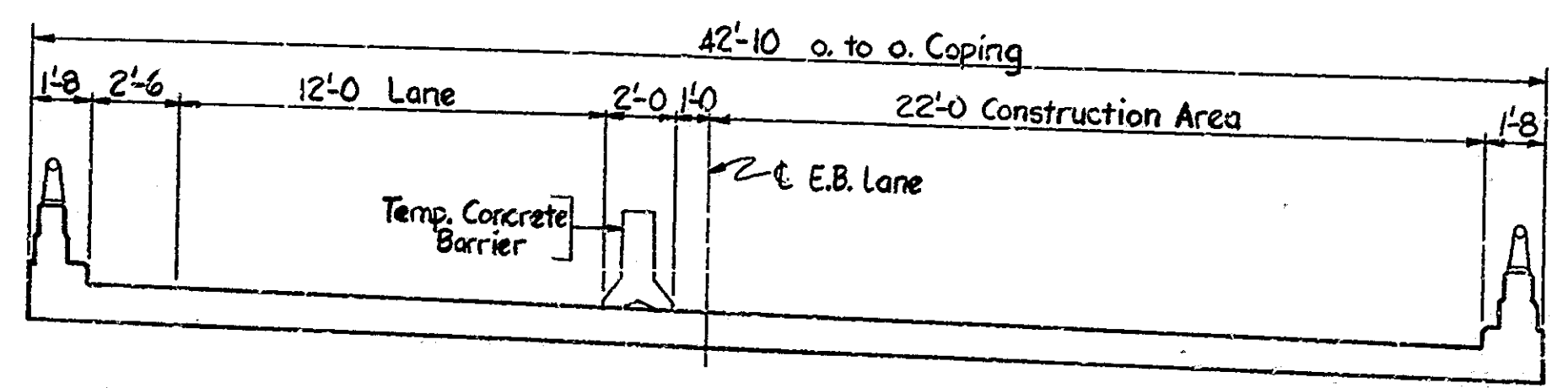
Size or Mark	No of Bars	Length	Weight
#5	70	10'-8"	
Total #5			779 LBS.
401	8	17'-7"	
#4	20	17'-0"	
Total #4			321 LBS.
Total Reinforcing Steel			1100 LBS.
CONCRETE			
Concrete Class A in Superstructure			4.9 CYS.
MISCELLANEOUS			
Exp. Joint Type BS-II			45 LFT.

ESTIMATE OF QUANTITIES

Code No	Description	Unit	Quantity
51001	Concrete, Class A in Superstructure	CYS.	4.9
51030	Reinforcing Steel	LBS.	1100
51328	Removal of Present Str. (Portions)	LSUM	1
52640	Maintaining Traffic	LSUM	1
52340	Construction Signs (Type A)	EACH	12
52345	Construction Signs (Type B)	EACH	2
52361	Temp. Pavement Marking Type I	LFT.	1870
52362	Temp. Pavement Marking Type II	LFT.	760
06714	Line, Solid, Yellow, 4"	LFT.	530
06717	Removal of Line, Solid, Yellow, 4"	LFT.	530
53055	Removal of Thermoplastic Line, Skip, White, 5"	LFT.	310
	Thermoplastic Line, Skip, White, 5"	LFT.	320
52536	Temporary Concrete Barrier	LFT.	330
52821	Flashing Arrow Sign	WKS.	
51890	Expansion Joint, Type BS-II	LFT.	45



NOTE:
See Bridge Standard C1 for Reinforcing Bar Notes.



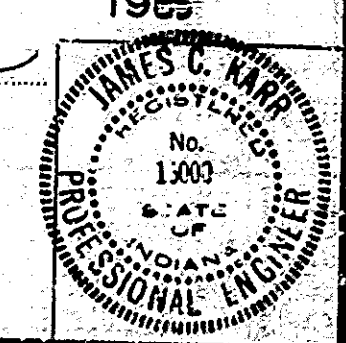
SECTION "A-A"
No Scale

TRAFFIC MAINTENANCE DETAILS & ESTIMATE OF QUANTITIES
INDIANA DEPARTMENT OF HIGHWAYS

SCALE: AS NOTED DATE: FEBRUARY 7 1965

DESIGNED: CKD
DRAWN: DRF 1/2/65 CKD GMS 1/14/65
TRACED: CKD
SF-22317

DRAWING: R2 OF 2 SHEET: 2 OF 10
PROJECT: STI-70-1(B) STATION: -
BRIDGE CONTRACT NO. B-15465
BRIDGE FILE: I-70-7-5039C



END STR

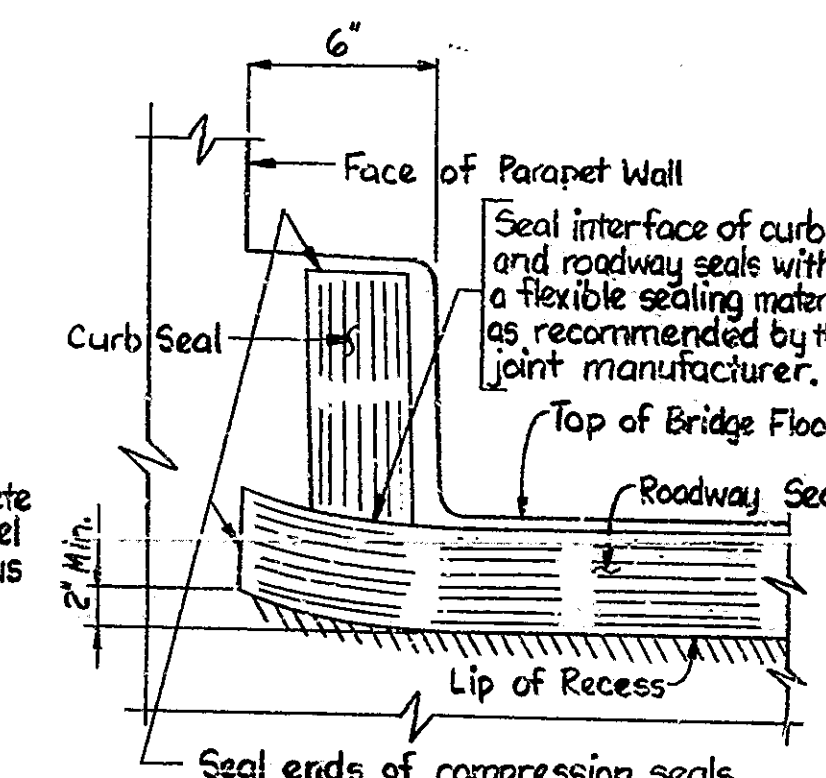
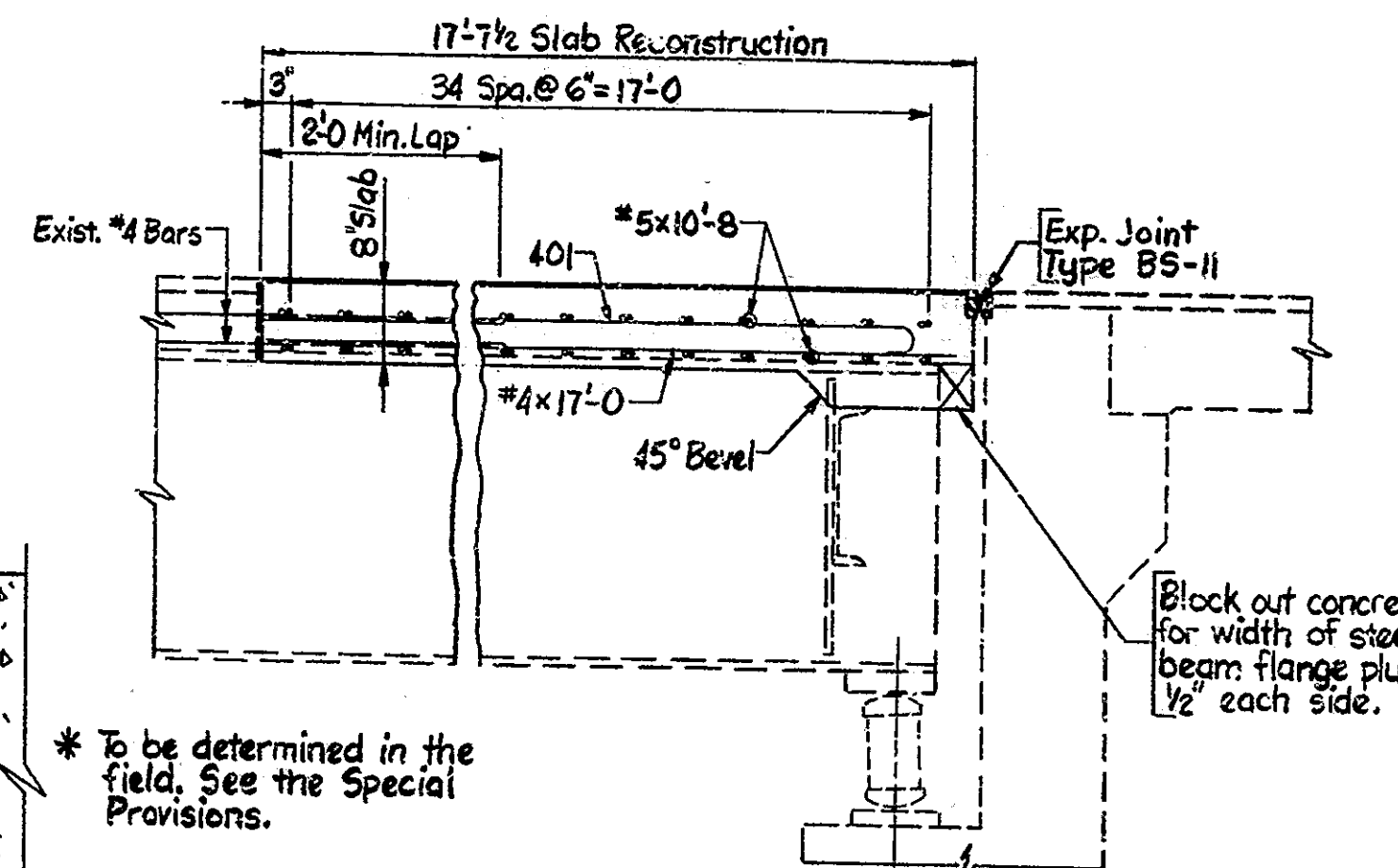
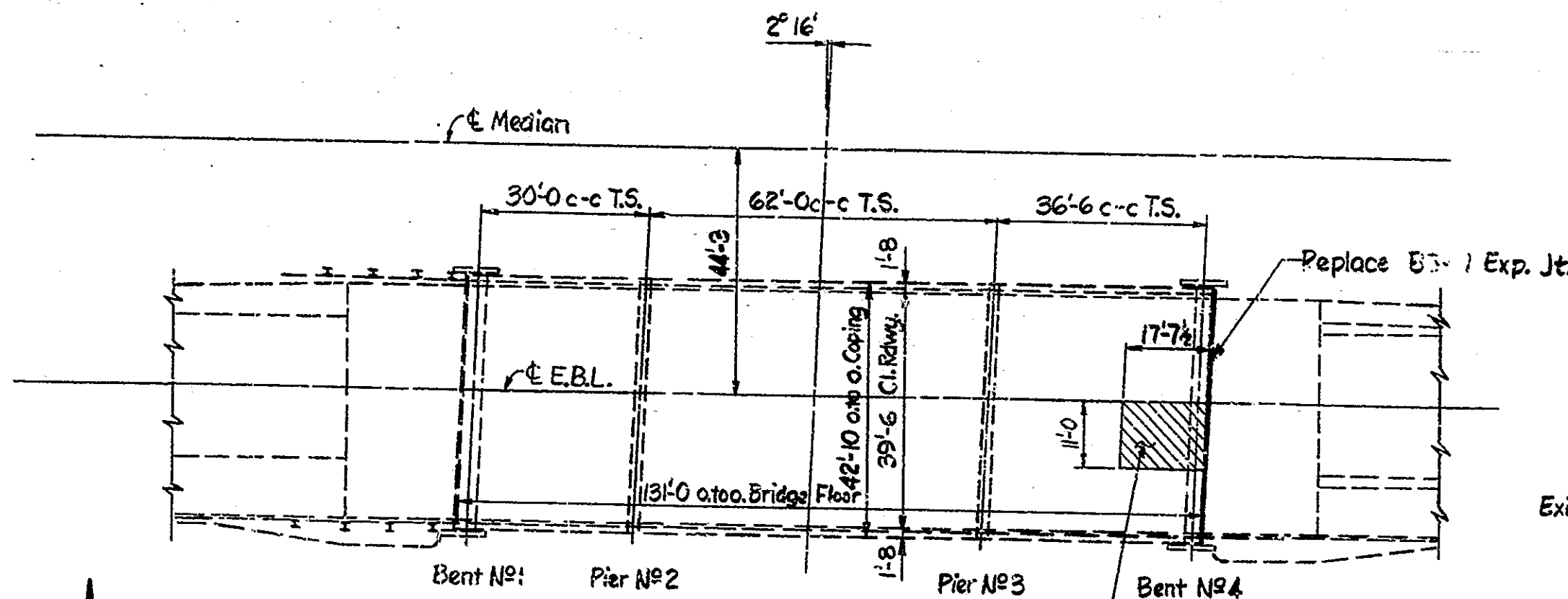
I-70-7-5039C

GENERAL NOTES

Plans of the present structure are on file as I-70-7-5099 in the Central Office.
 All concrete in structure to be Class "A".
 Where new work is to be fitted to old work, the Contractor shall check all dimensions and conditions in the field and report any errors or discrepancies to the Engineer and assume full responsibility for their correctness and the fit of new parts to old.
 All removal equipment used for partial concrete removals of bridge floors shall be hand held pneumatic hammers, 30 lbs. maximum weight shall be used for all areas within 24 inches of full depth removal lines. All removal equipment shall be hand held for areas directly over steel beams. Pneumatic hammers, up to 90 lbs. maximum weight, may be used for all other removals outside these limits provided these removal areas are completely separated (concrete and steel) from the adjacent concrete over beams.

BRIDGE	ROAD	DESCRIPTION
C1		Reinforcing Bar Notes
	CB 2	Temporary Concrete Barrier
	1	Standard Detour Signs
	2A	Standard Detour Signs
	3	Standard Detour Signs
	4	Standard Detour Signs
	5A	Standard Detour Signs
	MT 3	Sign Standards

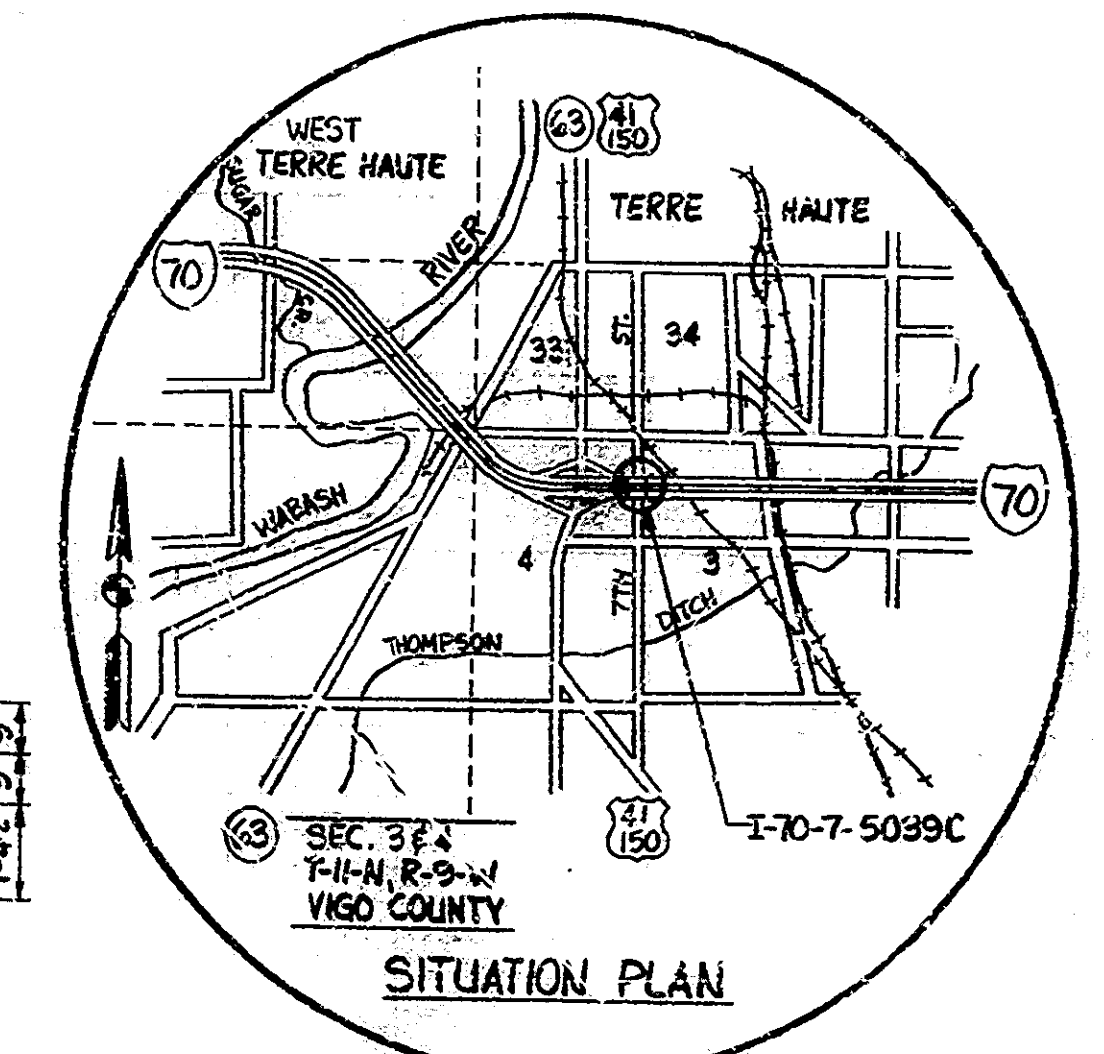
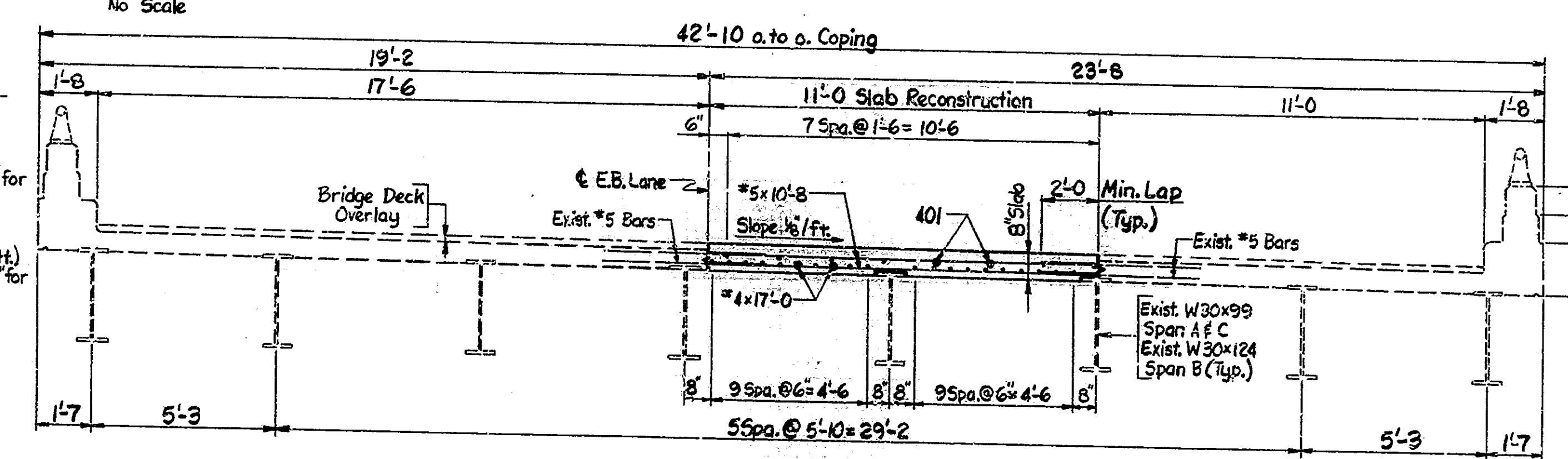
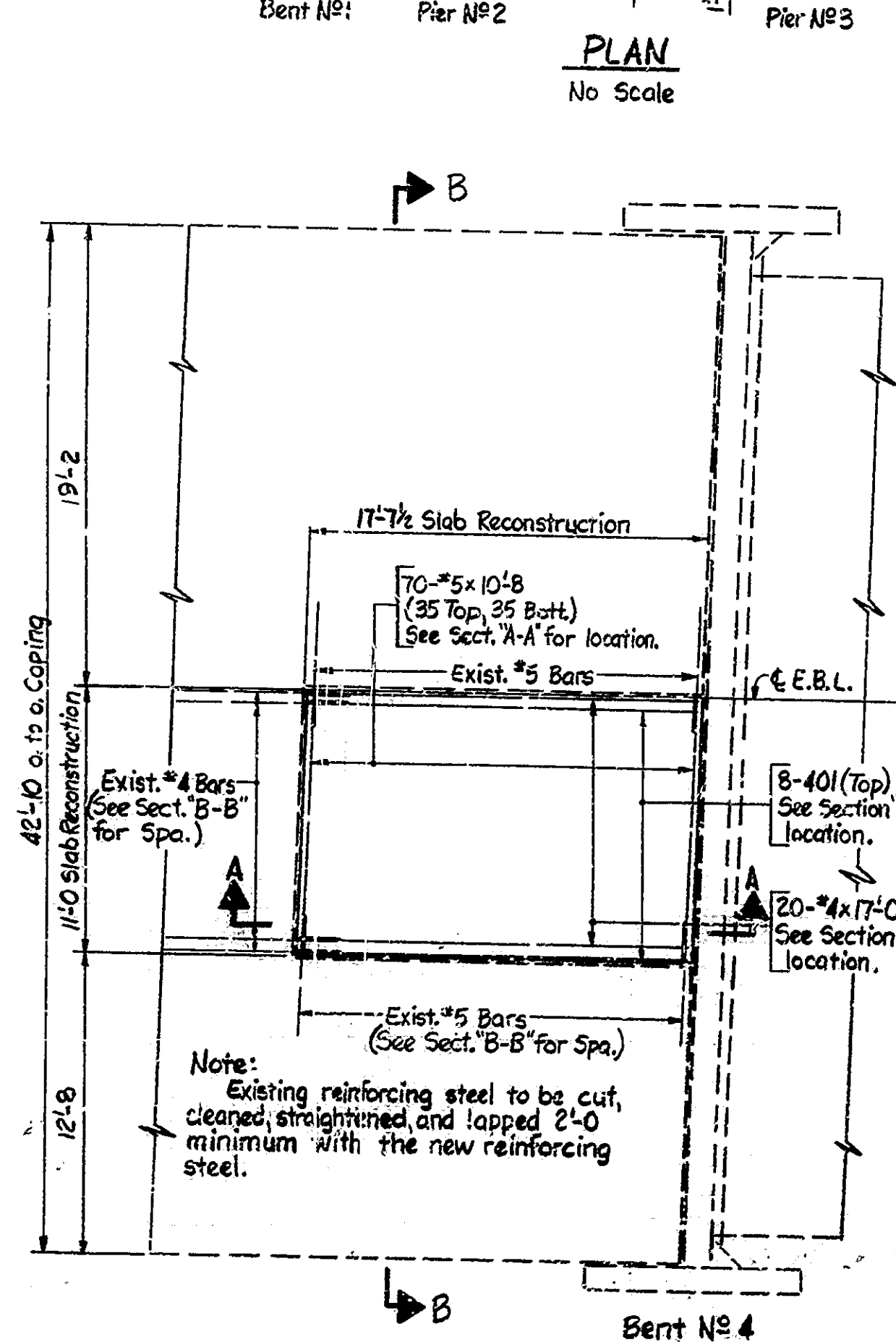
SHEET NO.	SHEET DESIGNATION	SUBJECT	FILE NO. APPROVAL	ADOPTED REVISION
1		Title Sheet & General Plan		
2		Traffic Maintenance Details & Estimate of Quantities		
3	Bridge Standard C1	Miscellaneous Details	12-21-81	R 12-7-81
4	Road Standard Sheet CB 2	Temporary Concrete Barrier		R 6-1-84
5	Road Standard Sheet 1	Standard Detour Signs		R 2-1-85
6	Road Standard Sheet 2A	Standard Detour Signs		R 2-1-85
7	Road Standard Sheet 3	Standard Detour Signs	4-10-84	R 2-1-84
8	Road Standard Sheet 4	Standard Detour Signs	12-8-83	R 10-3-83
9	Road Standard Sheet 5A	Standard Detour Signs	4-10-84	R 2-1-84
10	Road Standard Sheet MT 3	Miscellaneous Standards	8-30-82	A July 1982



CONSTRUCTION PROCEDURE

- One lane of traffic shall be maintained as detailed on Sheet No. 2.
- Remove and replace the portion of the floor slab as detailed in the plans.
- Perform other work as indicated in the plans.
- Reopen the structure to two lane traffic.

The sequence of the above notes does not necessarily indicate the sequence of operations.
 Note: The cost of reconstructing curbs to install the seals shall be included in the cost of the expansion joint type BS-11.



TITLE SHEET & GENERAL PLAN

REPAIRS TO CONTINUOUS STEEL BEAM BRIDGE
 3 SPANS: 30'-0", 62'-0", 36'-6" SKEW: 2'16" RT. 39'-6" CL. RDWK.
 ON INTERSTATE 70 OVER SEVENTH ST.
INDIANA DEPARTMENT OF HIGHWAYS
 VIGO COUNTY

INDIANA DEPARTMENT OF HIGHWAYS
 STANDARD SPECIFICATIONS DATED 1985
 TO BE USED WITH THESE PLANS.
 DESIGNED: CKD
 DRAWN: DRE 1/11/85 CKD GMS 1/14/85
 TRACED: CKD
 SF-22317

NOTE: Wherever "Indiana State Highway Commission" appears in these plans it shall be interpreted as "Indiana Department of Highways".

APPROVED 2-18-85
 James K. Hollark
 CHIEF HIGHWAY ENGINEER

RECOMMENDED FOR APPROVAL 2-7-85
 James D. Swafford
 ENGINEER OF BRIDGE PLANS

RECOMMENDED FOR APPROVAL 2-19-85
 William B. Agresti
 ENGINEER OF BRIDGE DESIGN

WILLIAM B. AGRESTI
 REGISTERED PROFESSIONAL ENGINEER
 No. 8643
 STATE OF INDIANA
 LICENSE EXPIRES 12-31-85

DATE: FEBRUARY 7 1985
 SCALE: AS NOTED
 DRAWING: R 1 OF 2 SHEET: 1 OF 10
 PROJECT: STI-70-1(B) STATION: BRIDGE CONTRACT NO. B-15465
 BRIDGE FILE: I-70-7-5099C